



8 Drabbles Road
, Matlock, DE4 3LD

£350,000



8 Drabbles Road

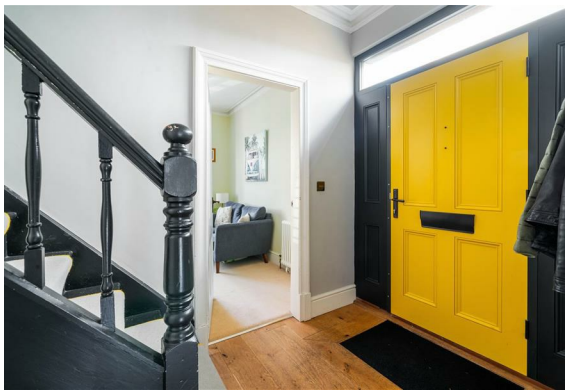
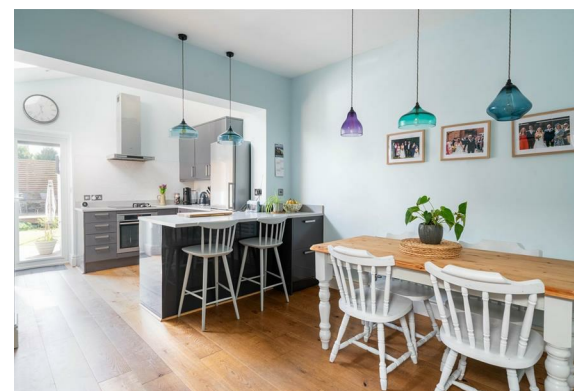
, Matlock, DE4 3LD

Situated within close proximity from the centre of Matlock is this attractive and deceptively spacious 3 bedroom end terrace townhouse. Offering 1076 sqft of living accommodation over 3 storeys, the property features a beautifully decorated, bay fronted family lounge with log burning stove, an open plan dining kitchen with integrated oven and dishwasher, a modern bathroom with freestanding bath and rain shower, spacious bedrooms and a low maintenance garden with patio and decked area.

The ground floor comprises; Entrance hallway, bay fronted living room with log burning stove, generously proportioned open plan dining kitchen with breakfast bar and log burning stove, with access onto the rear garden.

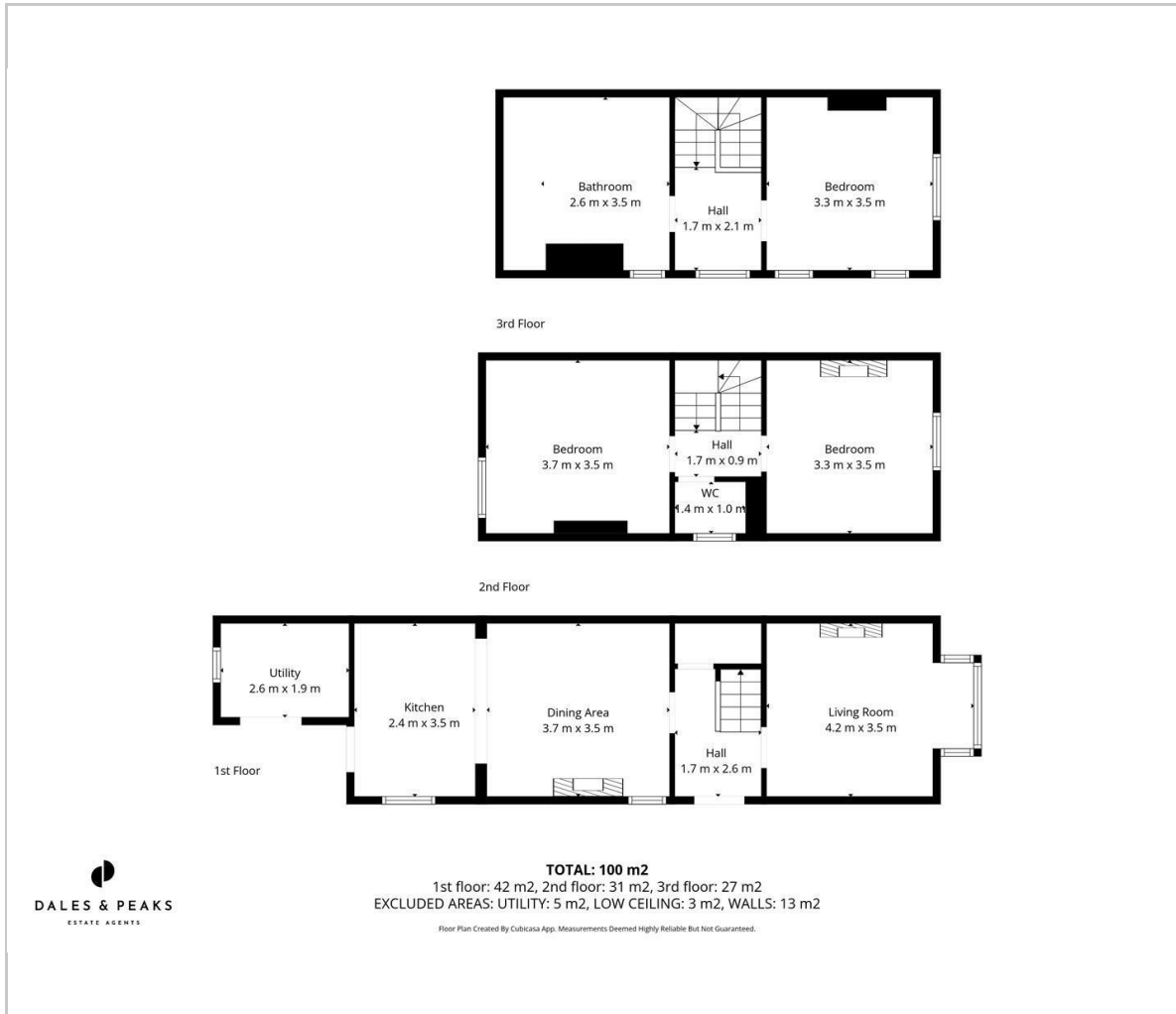
The first floor comprises; Master bedroom with views over the surrounding countryside, second double bedroom and separate WC.

The second floor comprises; Front aspect double bedroom, and bathroom with rainfall shower and freestanding bath.





Floor Plan

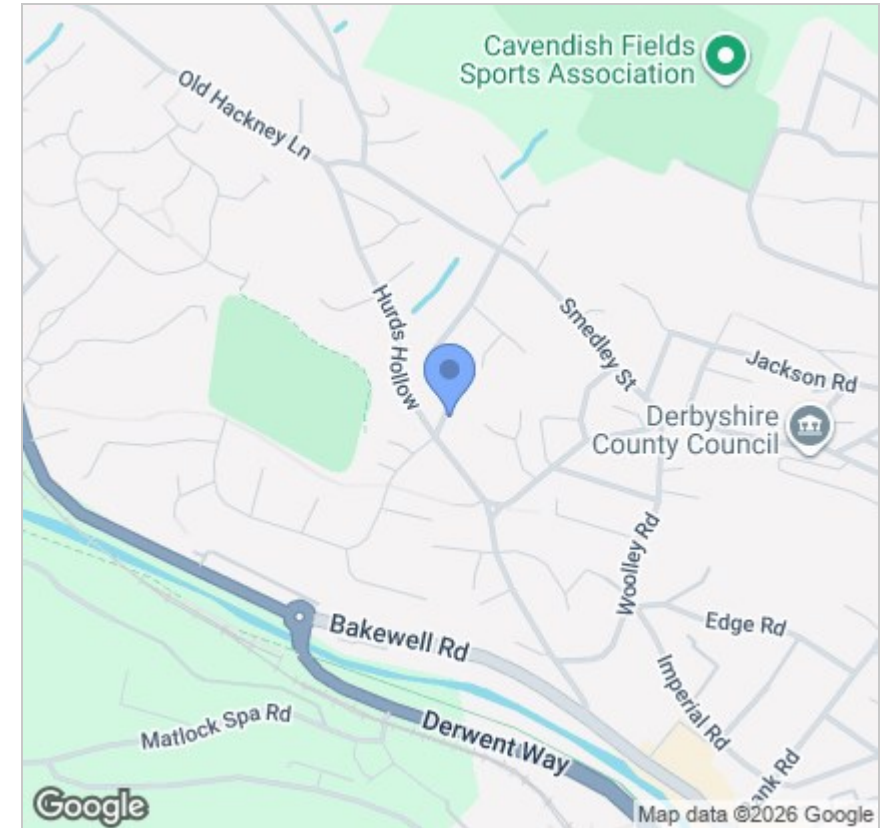


Viewing

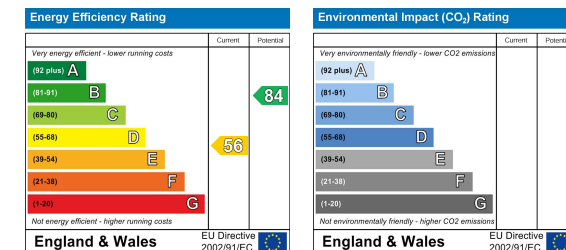
Please contact our Chesterfield Office on 01246 567540 if you wish to arrange a viewing appointment for this property or require further information.

These particulars, whilst believed to be accurate are set out as a general outline only for guidance and do not constitute any part of an offer or contract. Intending purchasers should not rely on them as statements of representation of fact, but must satisfy themselves by inspection or otherwise as to their accuracy. No person in this firm's employment has the authority to make or give any representation or warranty in respect of the property.

Area Map



Energy Efficiency Graph



131 Chatsworth Road, Chesterfield, Derbyshire, S40 2AP
 T: 01246 567540



E: info@dalesandpeaks.co.uk
 www.dalesandpeaks.co.uk